



| JAYCEE PARK FINAL CONCEPT
CITY COUNCIL MEETING
JULY 24, 2024

Jaycee Park Improvements – Quick Recap

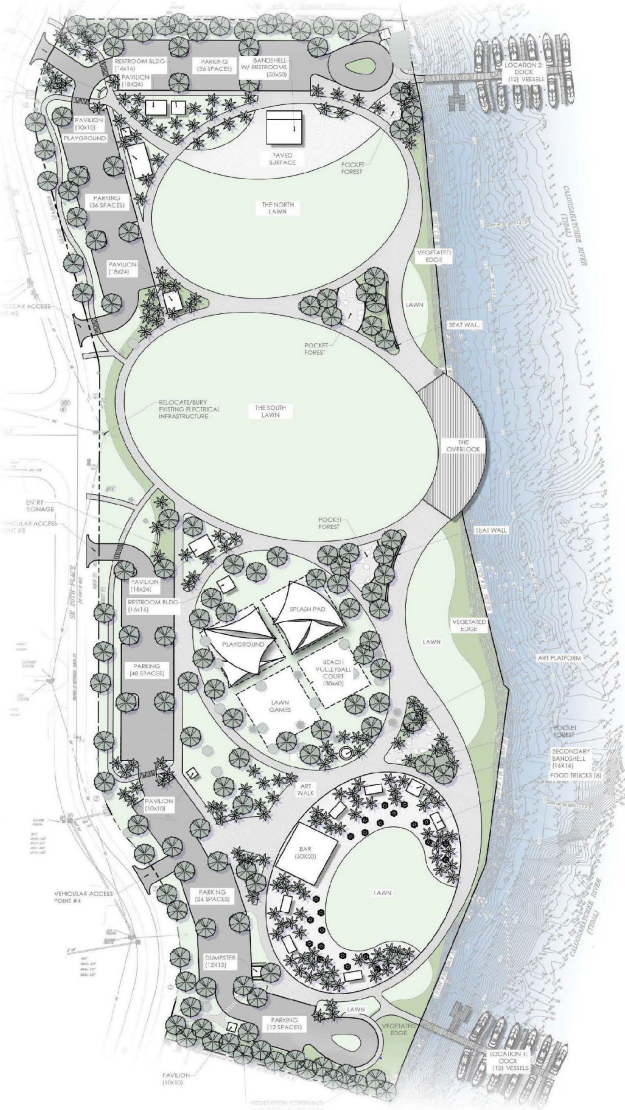
- A. RFP issued in March 2022 for design of the Jaycee Park Improvements.
- B. City selected Pennoni Associates Inc. in May 2022 to provide design and engineering services. Prior to negotiating a contract, City staff and Pennoni developed initial concept to present to City Council.
- C. Initial Concept for Jaycee Park presented at City Council Winter Retreat in January 2023.
- D. City staff brought Pennoni contract for design and engineering Pennoni to City Council on May 3. Council gave approval to proceed pending public involvement meetings.
- E. City staff conducted public involvement activities:
 - 1. Open House at Mercola Market on August 31 (217 attendees)
 - 2. Online community survey to solicit feedback on various park amenities for Jaycee (1,495 participants)
- F. Feedback received from Open House and Online Survey presented to City Council at Committee of the Whole meeting on September 13.
- G. Council Approved Resolution on October 18 to Begin Design Work

Jaycee Park Improvements

Status

- A. On March 26, the City held a public review of the 30% design plans as promised.
- B. On May 9, Pennoni submitted 60% designs to the SFWMD for the Environmental Resources Permit and the City for the Site Development Plan approval.
- C. Design work continuing toward completion.

Original Concept January 2023



Jaycee Park Improvements

What has changed in the final design of Phase I?

Public Feedback Items to Consider

1. More, More, More Shade
2. Green Space
3. Bar
4. Bandshell
5. Restrooms (too many)
6. Cooling
7. Accessibility for Physically Challenged
8. Additional Amenities (Bike Racks, Grills)
9. Memorial Benches

Jaycee Park Final Concept

Shade and Green Space

<i>Tree Count</i>	<i>500+ new trees</i>
<i>Shrub Count</i>	<i>1,000+ new shrubs</i>
<i>Ground Cover</i>	<i>8,500+ new ground cover plantings</i>
<i>Mulch</i>	<i>106,400 sf of mulch</i>

Keeping the Park **Green** with Sitewide Irrigation

Other Shaded Locations

1. Covered playground
2. Shade sails at Splash Pad
3. Five pavilions w/picnic tables
4. Round picnic tables w/umbrella covers
5. Shade sail seating along the waterfront on north and south ends
6. Canvas recycled custom-painted covered benches
7. Bistro tables under shade at *"The Reef"*

Jaycee Park Final Concept

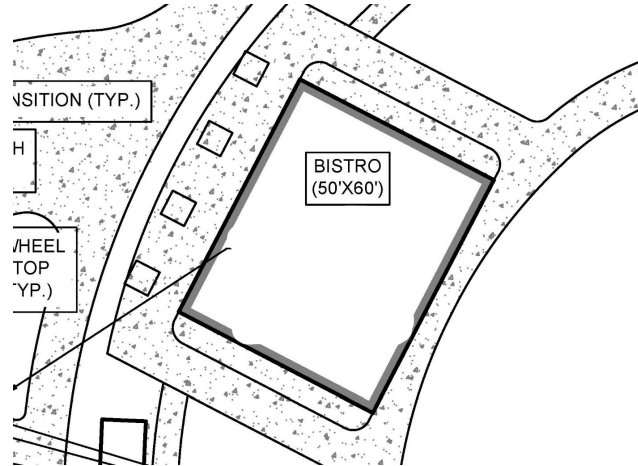
Bar/Bistro

Most Significant Change

1. *We changed direction on this amenity based on concerns expressed about the image an actual “bar” might present.*
2. *The “Bar/Bistro” as envisioned in the original concept is gone.*
3. *Overall function has been modified and building size significantly reduced.*
4. *The new concept is influenced by the “Spa Beach Bistro” on St. Pete Pier.
 - a. *Spa Beach Bistro is walk-up pizza and beverage service in middle of the pier.*
 - b. *Splash pad and playground are adjacent to the Bistro on east and west sides.**

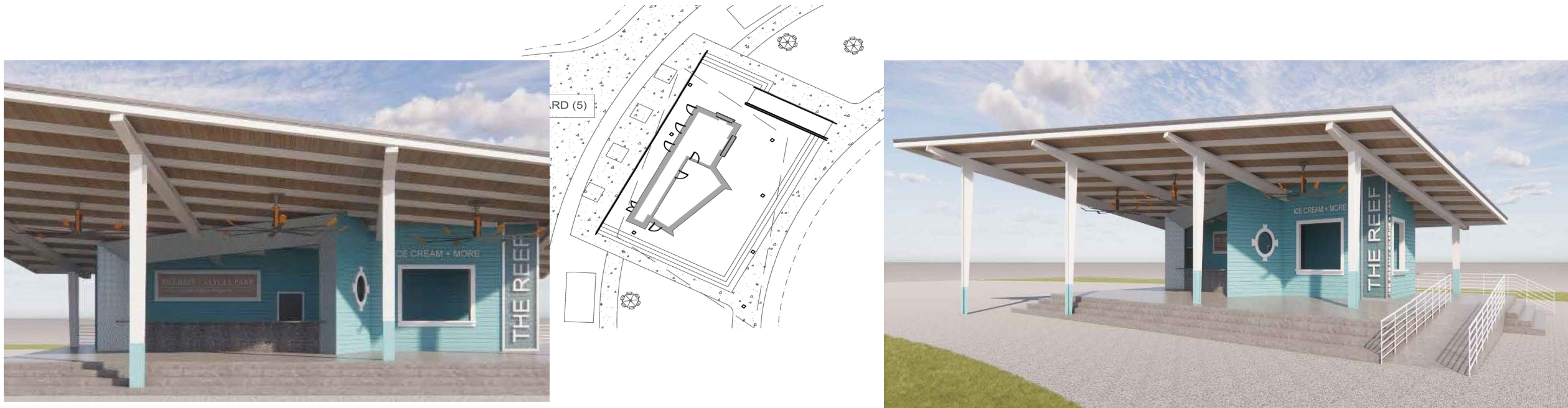
Jaycee Park Final Concept

Here is the original 3,000 sf footprint for the bar and the concepts selected by the participants in the early survey.



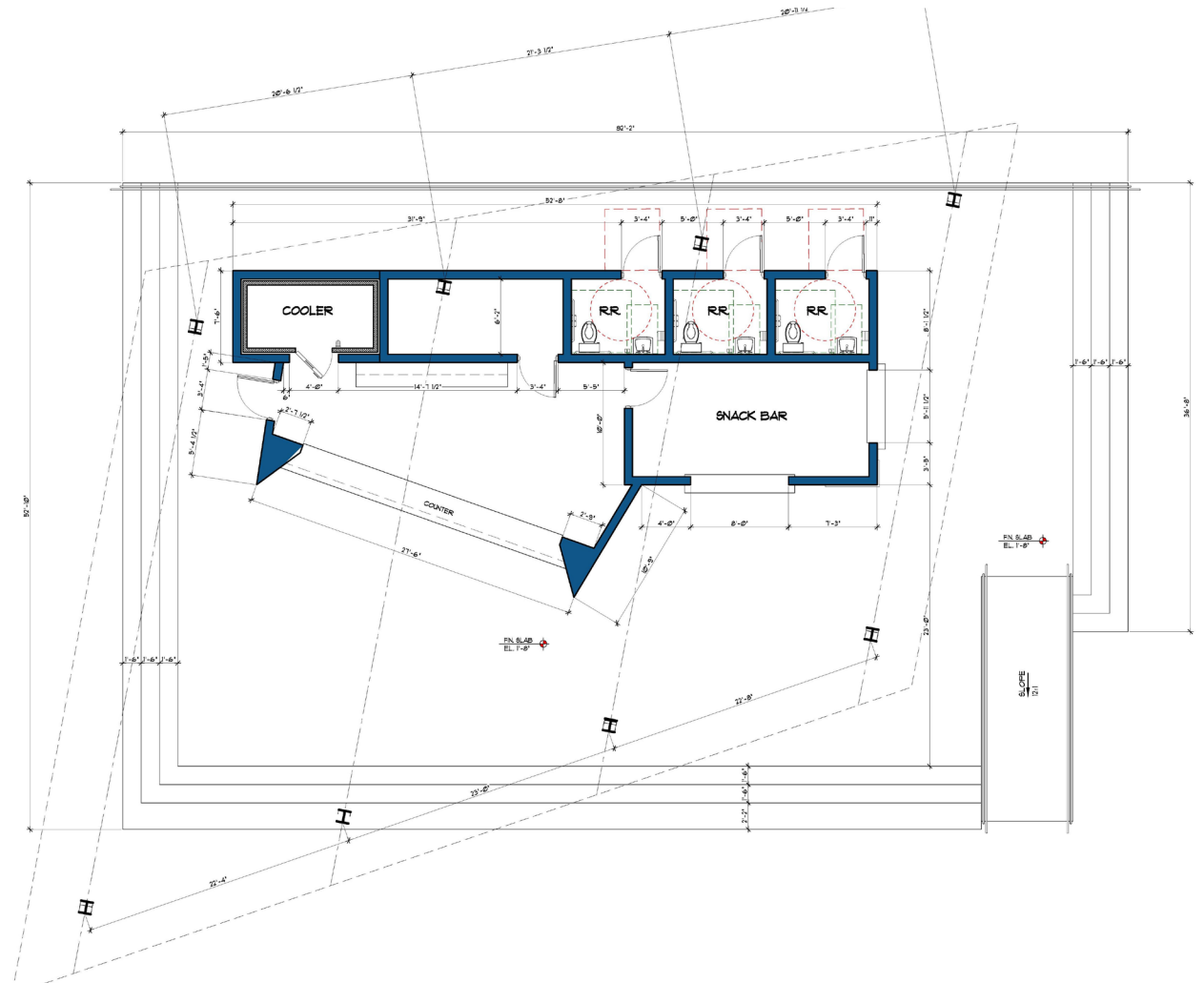
Jaycee Park Final Concept

Here is the same footprint showing how much space the new structure will occupy with the concepts provided by the P3 group.



“The Reef” Floor Plan

1. Building is about 1,000 sf
2. Snack Bar with Ice Cream and Other Treats on Right with Front and Side Service Windows
3. Beverage Counter on Left – No Seats or Stools
4. Walk-Up Service Only
5. A Few Bistro Tables on the Main Level for Patrons to Use
6. Oversized Roof to Provide Shade
7. Three Ceiling Fans to Cool Patrons
8. Three Unisex Restrooms in Back
9. Handicapped Access Ramp



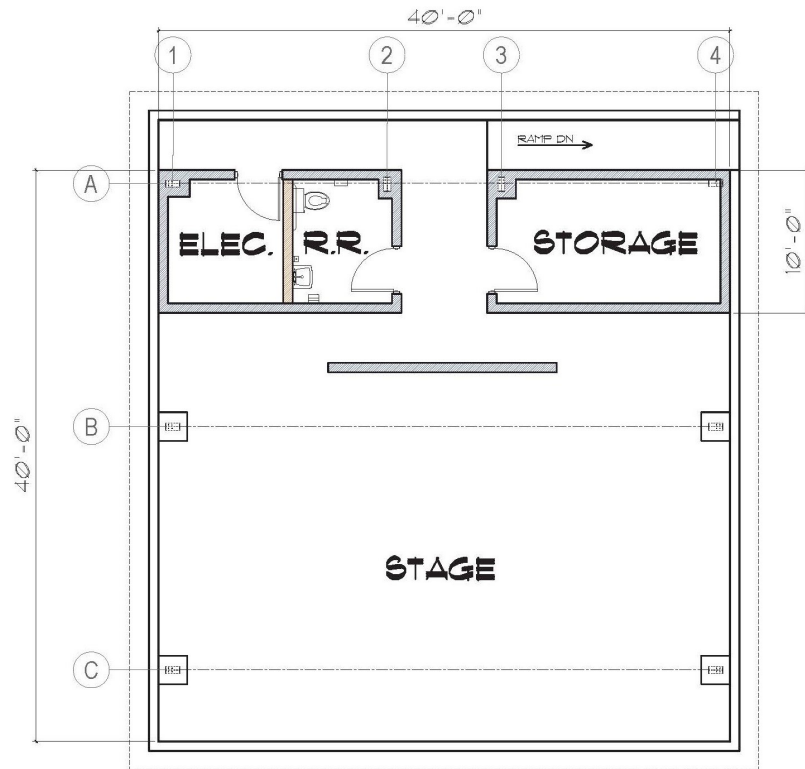
Jaycee Park Final Concept

Bandshell

1. *Initial design at 30% showed a 1,600 sf bandshell.*
2. *Public input from the 30% design meeting had several attendees say the structure looked like a glorified pavilion. Based on this feedback, the design was modified to look more like a bandshell, which increased the size to 2,400 sf.*
3. *Following public sentiment that the bandshell now was too big, the structure was redesigned and reduced in size to about 1,200 sf.*

Jaycee Park Final Concept

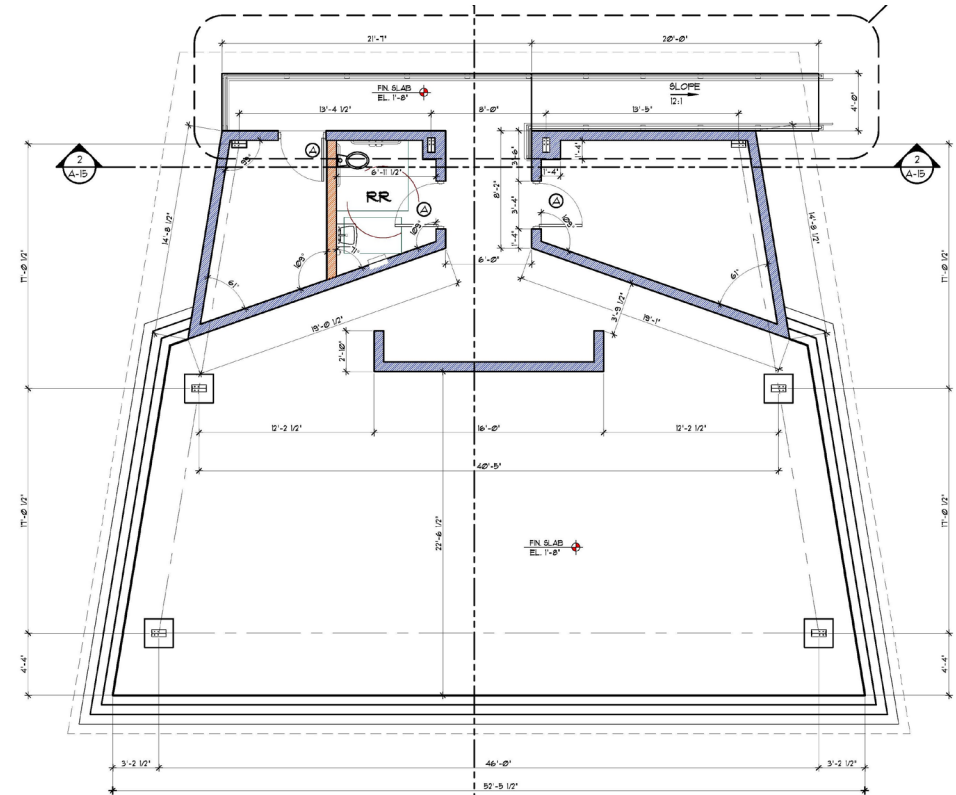
30% Design vs. 75% Design



PROPOSED FLOOR PLAN

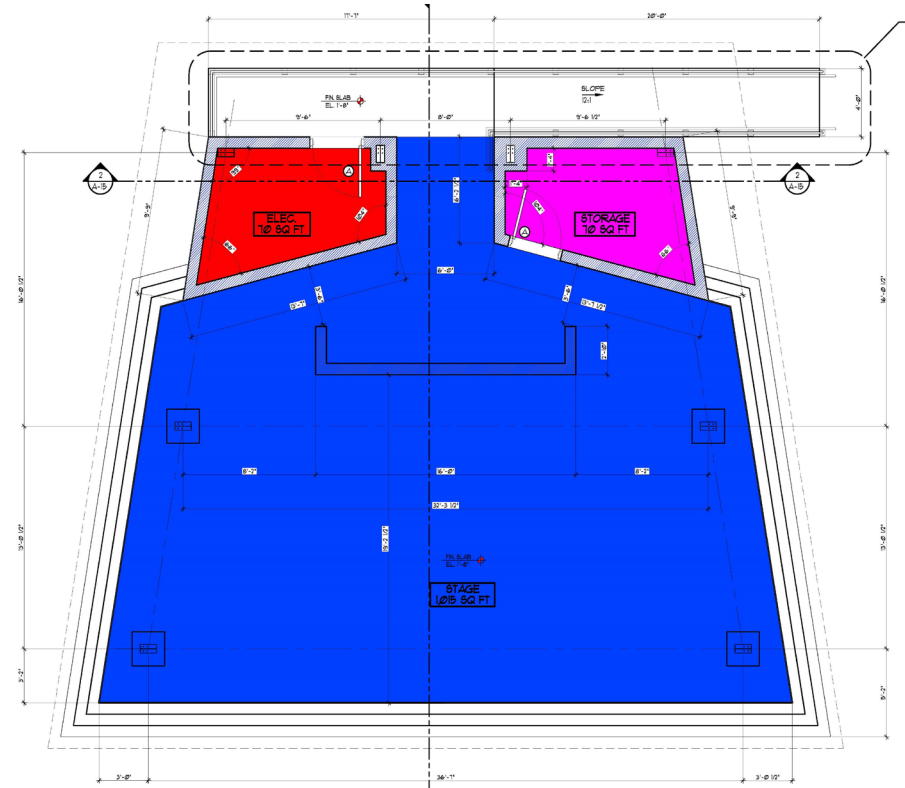
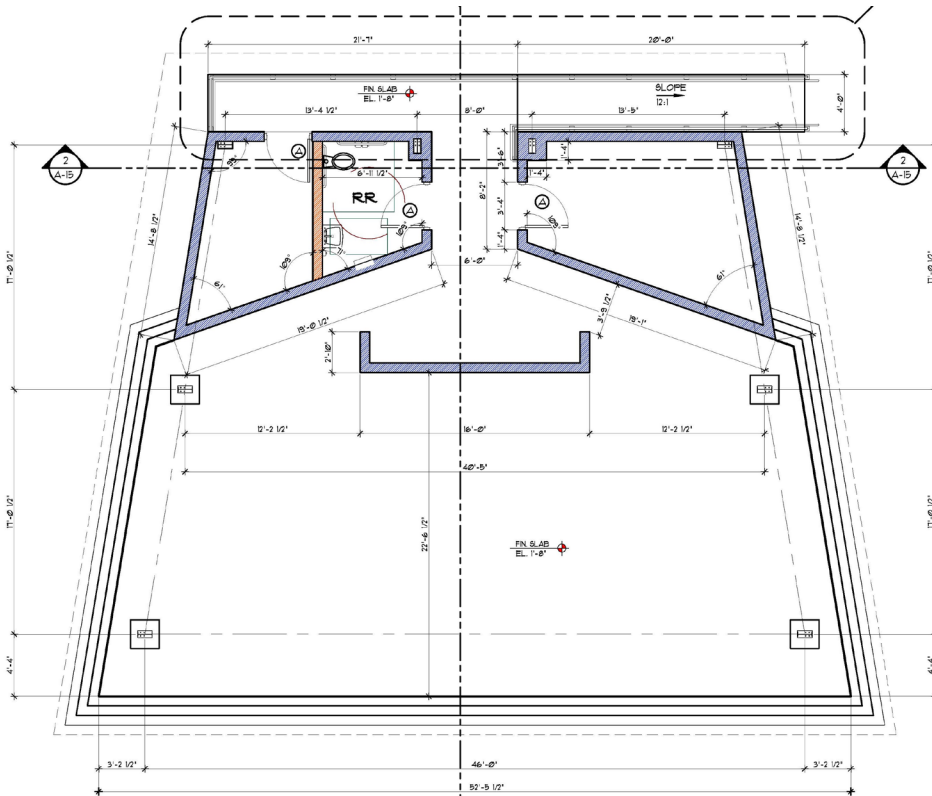
OPTION 1

BANDSHELL
SCALE: 1/4"=1'-0"



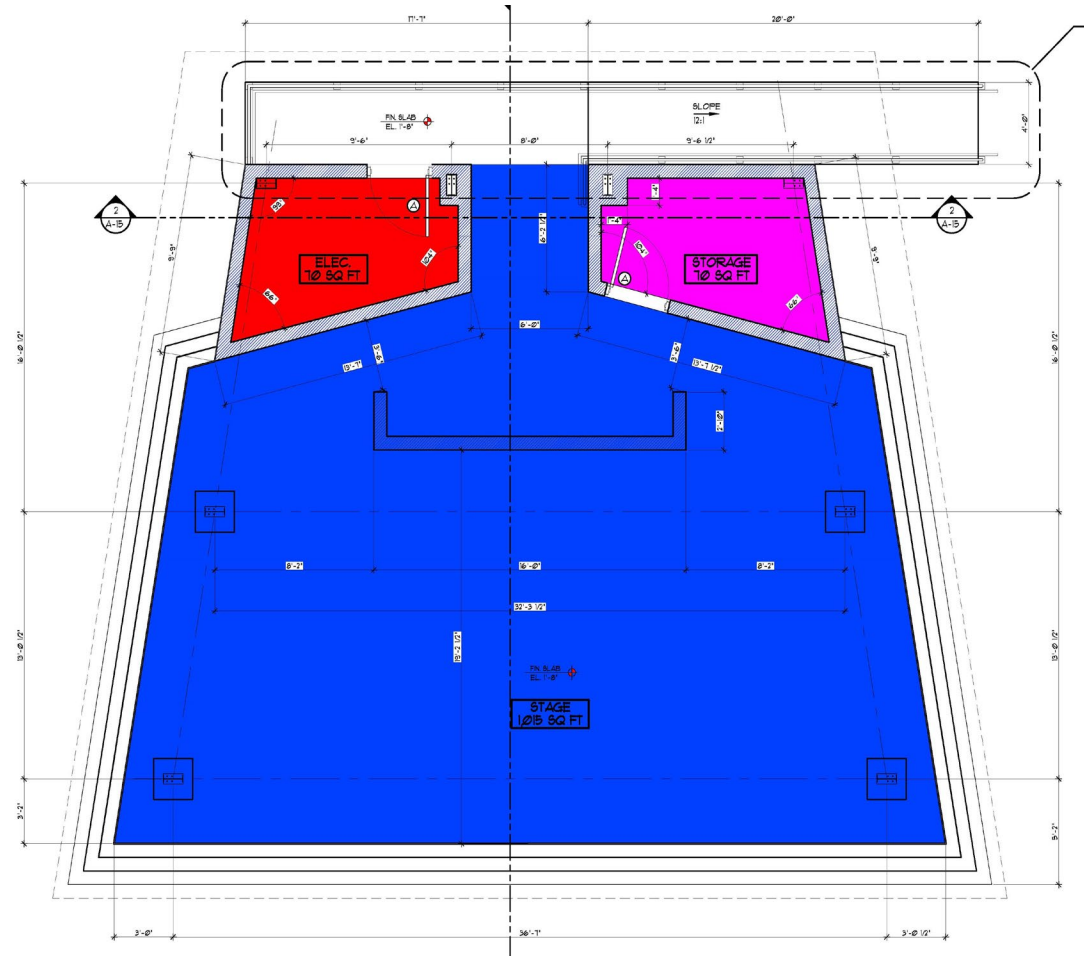
Jaycee Park Final Concept

75% Design vs. Updated 75% Design



Bandshell Final Design

1. Bandshell is about 1,200 sf
2. Stage Size: 1,015 sf
3. Restroom Removed
4. Smaller Storage and Electrical Rooms
5. Handicapped Access Ramp



Jaycee Park Final Concept

Too Many Restrooms

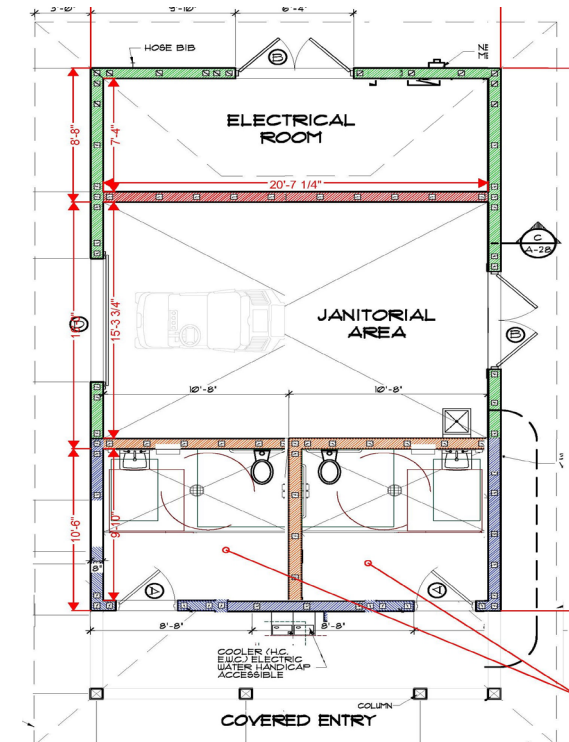
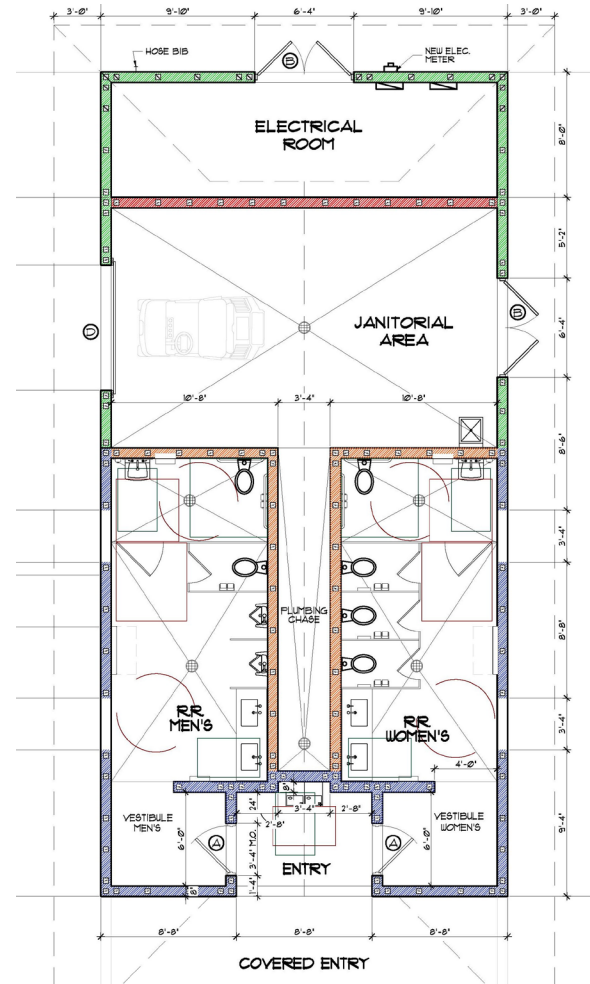
- 1. Initial design provided two, large restroom buildings and The Reef stalls**
 - a. *Jaycee Park currently has two restroom buildings: One with four stalls, one with two stalls – Six total stalls*
 - b. *Design proposed a North restroom building with eight stalls + storage for maintenance*
 - c. *Design proposed a Central restroom building with eight stalls + splash pad pump equipment*
 - d. *The Reef design included three stalls.*

- 2. Public criticism was there were too many restrooms for the amenities**

- 3. City revisited the restroom and reduced the size of the North restroom.**

North Restroom Floor Plan

1. Reduced from eight stalls to two unisex bathrooms.
2. Retained needed maintenance storage and electrical room.
3. Combined with full bathroom facility in central location and three unisex stalls at *The Reef*, total stalls at Jaycee will be 13.



Jaycee Park Final Concept

Cooling and Hydration

1. ***We needed to provide options to keep our pets cool as well as their “human” companions during the hot, summer months.***
 - a. *Hydration for pets*
 - b. *Cooling for pets and people*

Cooling Options



Dog Accessible Drinking Bowl (3)



Dog Cooling/Misting Station



People Cooling/Misting Station

Jaycee Park Final Concept

Handicapped Accessibility

- 1. Four handicapped parking spaces in North Lot and five in South Lot. ADA ramps w/detectable warning surfaces (two in the North, three in the South).***
- 2. Spaces provide direct access to pedestrian pathway system within park.***
- 3. Pavilions accessible from pathways w/ADA-accessible picnic tables. Several umbrella-style picnic tables also ADA-accessible.***
- 4. Main playground is completely inclusive. Designed through PlayCore's National Demonstration Site Program, this 5,000 sf playground area will have "dual designation" and be recognized as national model for "Inclusion" and promoting physical activity ("Play On!"). Splash pad also has inclusive elements for children.***
- 6. ADA ramps at The Reef and Bandshell.***

Jaycee Park Final Concept

Main Playground

(Playground will have full shade coverage)



CATERPILLAR



JAYCEE PARK
CAPE CORAL, FL

645-169390A

PLEASE NOTE: RENDERINGS ARE FOR VISUAL PURPOSES ONLY. ANY PRODUCTS AND/OR SITE DETAILS HEREIN MAY BE SUBJECT TO CHANGE WITHOUT NOTICE.

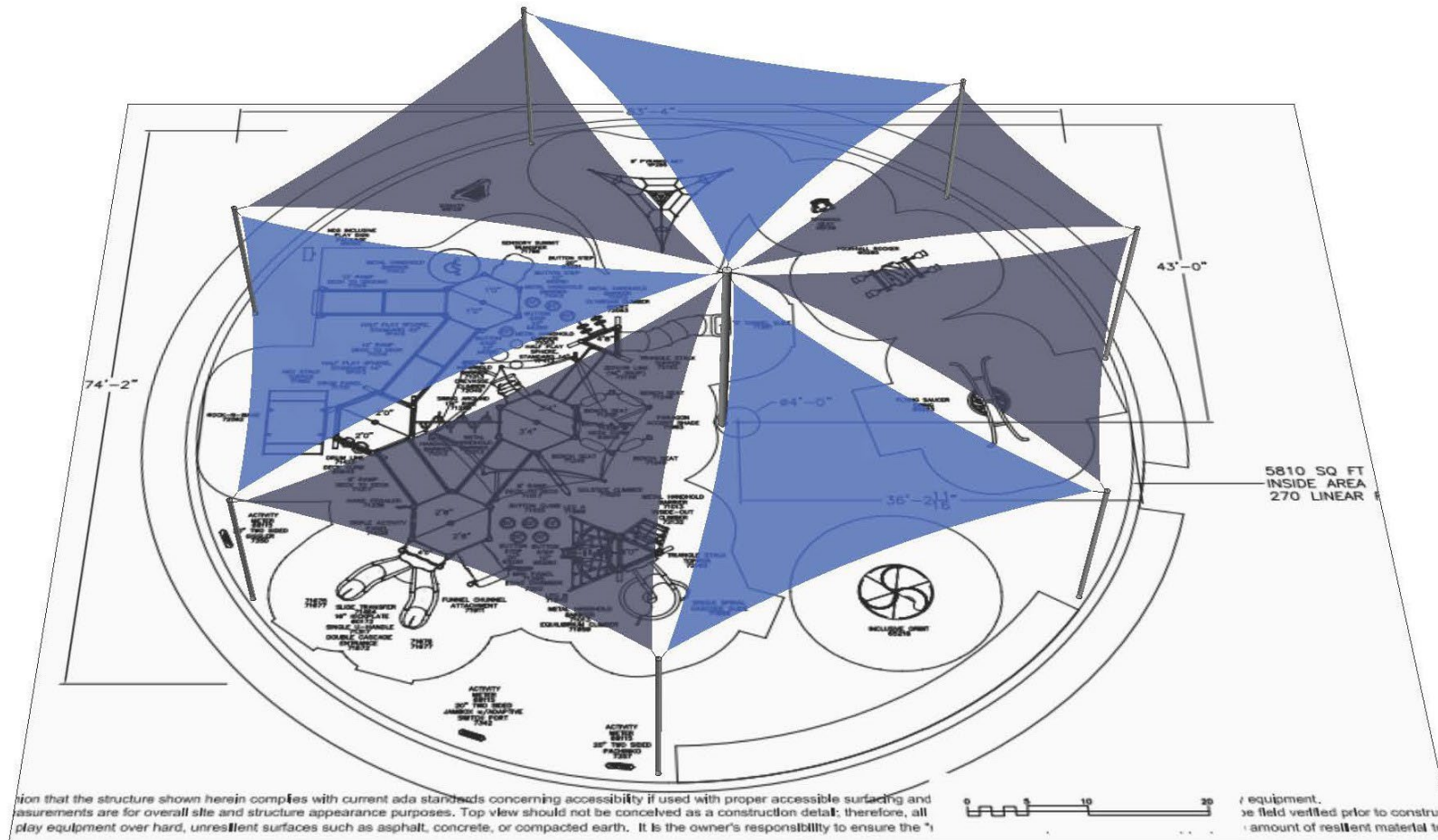


544 CHESTNUT ST.
CHATTANOOGA, TN 37402
800.727.1907
PLAYANDPARK.COM

Jaycee Park Final Concept

Main Playground

(with full shade sails)



Jaycee Park Final Concept

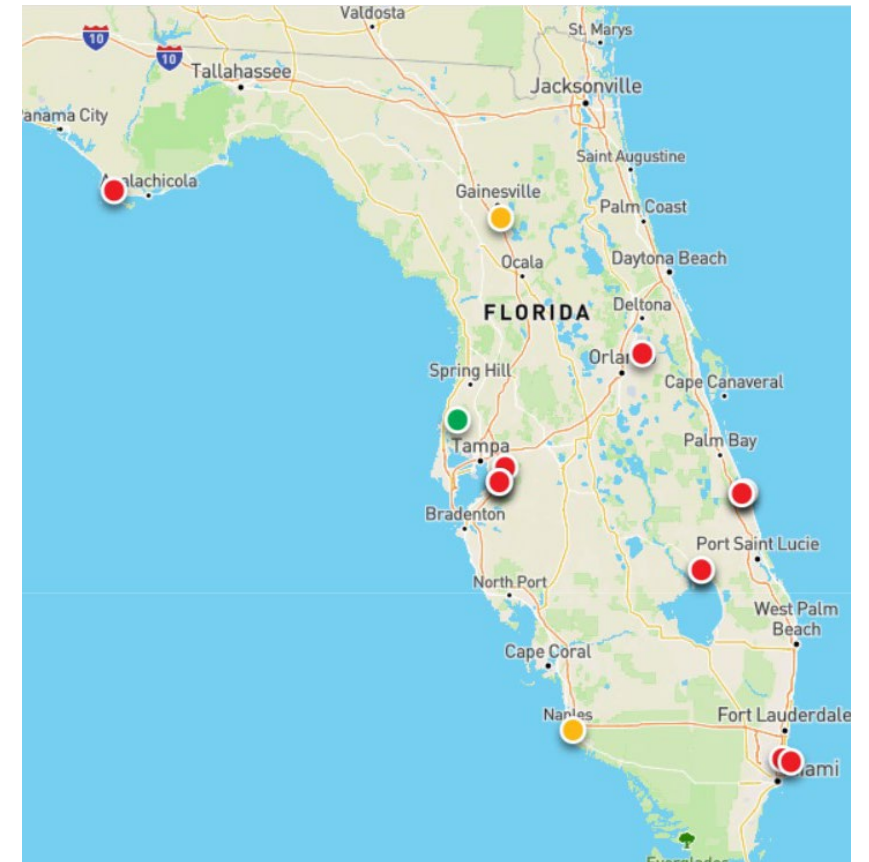
New Playground

National Demonstration Sites in Florida

1. Currently, 13 sites in Florida
2. Only 4 on the West Coast of Florida

National Demonstration Sites with a Dual Designation to include “Play On!”

1. Currently, there are only three sites in Florida with a dual designation
 1. Fleishman Park in Naples
 2. Lake Lisa Park in Port Richey
 3. Squirrel Ridge Park in Gainesville
2. Jaycee Park will be the 4th site in the state with Dual Designation.



Jaycee Park Final Concept

Food Trucks

While space is available for six trucks; we recommend starting with four trucks.

Additional Amenities

Grills – Grills will be located at two of the pavilions. Visitors also are welcome to bring their own tabletop grills.

Bike Racks – There will be six bike racks within the park.

Memorial Benches

Locations will be identified for “people” memorial benches along with a place in the north end with a special memorial recognition for pets.

Jaycee Park Final Concept

Summary and Next Steps

- 1. City listened to public feedback provided at public meetings, social media posts and via emails.***
- 2. While “doing nothing” was not considered an option, we looked for opportunities to implement changes and make modifications to the proposed project through the design process.***
- 3. We did not cut corners or go “cheap” on any planned improvements. We wanted the best amenities for Jaycee Park, which we knew would add costs to the project.***
- 4. It is quite reasonable to expect these significant enhancements (as requested by the public) will increase the initial concept estimate for the Jaycee Project by 30-35% (pre-fees).***

Next Step

Proposed comprehensive agreement and concessionaire’s agreement to be presented in an enabling resolution for Council approval on August 7.

Questions

